



Years Warranty*

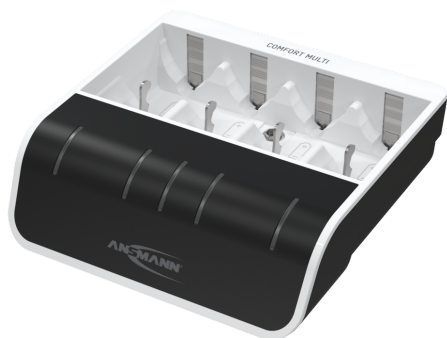
ANSMANN Comfort Multi

Quick charger with USB input for 1-4 NiMH rechargeable batteries, sizes AAA / AA / C / D as well as a 9V PP3

Features

- Quick charger with USB input for 1-4 NiMH rechargeable batteries, sizes AAA / AA / C / D as well as a 9V PP3
- incl. USB cable
- Microcontroller-based charging with individual slot monitoring
- Charging starts automatically with automatically adapted charge current once the batteries have been inserted with the correct polarity
- Status display by means of 3-colour LED for each charge slot
- For round cells: Intelligent "PERFECT 7 Charging" function: Rapid capacity test / gentle pre-charging / rechargeable battery analysis / quick-charging / IQ shutdown / top-off charging / maintenance charging
- For 9V PP3: Rapid capacity test / fault detection / time-controlled charging

**Powered by USB****Fast Charge Mode****Single Shaft Monitoring****Various Protections****Capacity Quick Test**



Article number: 1001-0093

Product content: Comfort Multi, 100cm USB cable, Manual

Customs tariff number: 85044055900

Packing Unit: 20 (368 × 354 × 295 mm)



Specifications

Input voltage	5V DC
For worldwide use	Yes
Chargeable cell chemistry	Nickel metal hydride
Chargeable cells	AAA / HR03 / AA / HR6 / C / HR14 / D / HR20 / 9V block / 6F22
Charging current AAA	400mA (1-4)
Charging current AA	800mA (1-4)
Charging current C	800mA (1-4)
Charging current D	800mA (1-4)
Charging current E	15mA (1)
Microprocessor control	Yes
Temperature monitoring	No
Safety timer	Yes
Single shaft monitoring	Yes
Overload protection	Yes
Battery defect detection	Yes
Quick capacity test	Yes
Color	white / black
Packaging	cardboard box