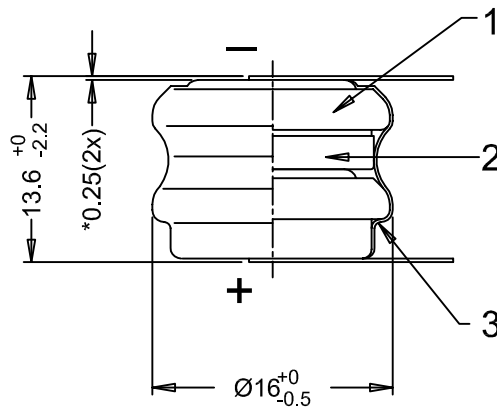
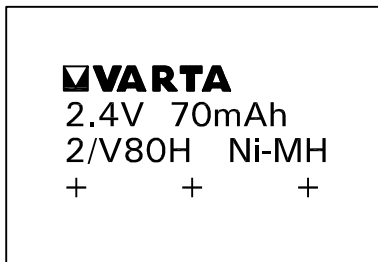
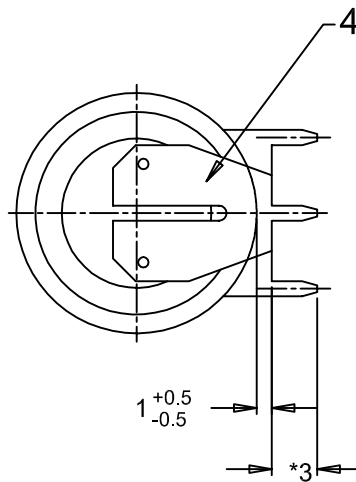
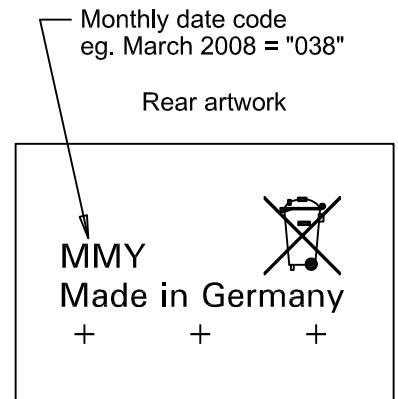


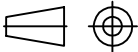
Front artwork



Rear artwork



- Note: 1) No welding onto the groove  
2) For typical PCB-application we recommend to use VARTA-Mempac batteries  
3) \* Dimensions for reference only

2	12-R070	To update Varta Logo Hatch			2012-04-26	TitisWS
1	R119/08	To add in printed sleeve the crossed-out wheeled bin symbol			2008-04-02	Ratna
No	AO No	Revisions			Date	Name
		Material:		Description:		
Projection: 		Refer to part list no: 071342		2/V80H battery with shrink sleeve & solder tags		
Dimensions in mm		Prepared & Checked	Verified & Approved		Dwg. No:	071342
Tolerance: As specified		1998-03-21	Titis WS			402
Scale: 2 : 1				VKB Order No: 55608 302 059		
Rights reserved to make technical changes, as a result of further development, without notice. This drawing is the property of VARTA Microbattery and must not be copied or disclosed to a third party without the written consent of VARTA Microbattery.						
