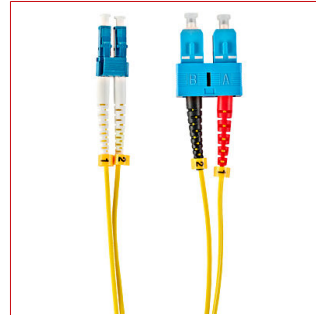
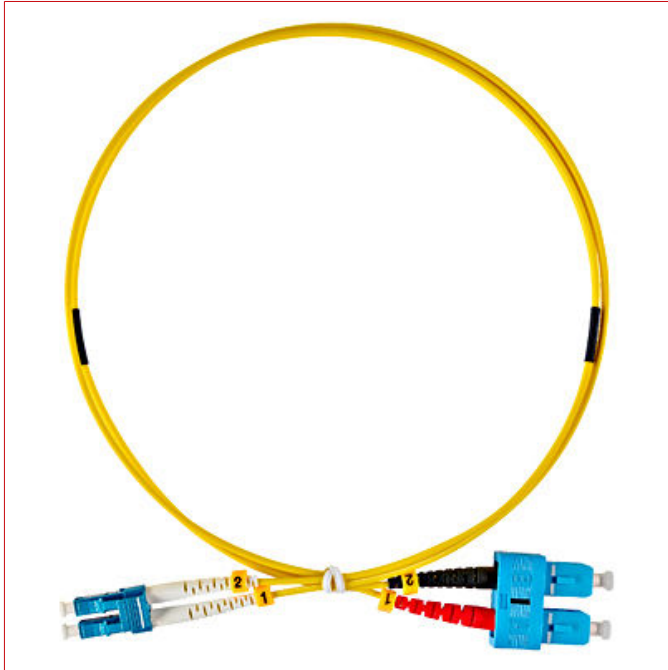


Data Sheet for Article: HLP29LC02F

FO Patchcord Duplex LC/UPC - SC/UPC, 9/125µm OS2, 2.0m

LSOH, yellow



SCHRACK-Info

Single mode patch cords are used for telecom networks and also used for high speed metropolitan and access network. The single-mode patch cables are equipped with an LSOH jacket. These comply with IEC or EIA-TIA standards. These singlemode enhanced patch cords are terminated with optimized connectors which give optimum optical performance.

FEATURES

- LC/UPC - SC/UPC connectors
- Low smoke zero halogen (LSOH) jacket
- 900 µm tight buffer
- Singlemode cabled fiber conforms to ITU-T G.657.A2, IEC 60793-2-50
- Duplex
- REACH, RoHS and SvHC materials compliant

APPLICATIONS

- CATV / Video
- Passive Optical Network PON
- WDM / DWDM
- FTTH
- Data centers
- Supports high speed multi channel video, data and voice services in metropolitan and access networks

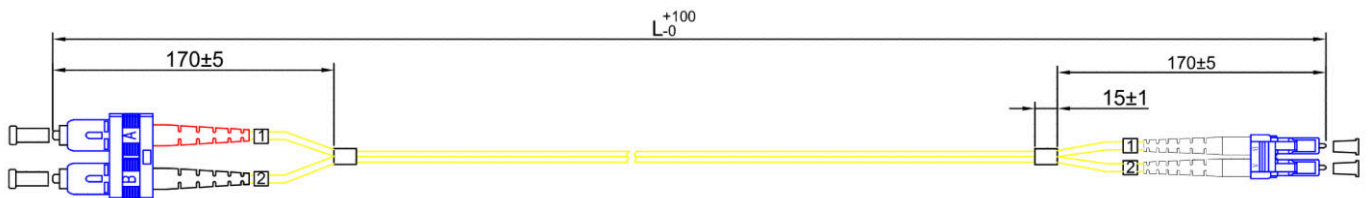
- ATM, SONET and WDM



Technical Data

Product standard	IEC 61300-3-4 / IEC 61300-3-6
Connector standard	IEC 61754
Combination of connectors	LC/SC
Patchcordlength (m)	2,0
Fiber	9/125 OS2 Singlemode
Cable jacket	LS0H
Colour	Yellow
Insertion loss typical (dB)	≤0,25
Return loss typical (dB)	≥50
Min. ambient temperature (°C)	-20
Max. ambient temperature (°C)	60
Net width (mm)	170,00
Net height (mm)	200,00
Net weight (kg)	0,11

Dimensioned drawing: FO Patchcord Duplex LC/UPC - SC/UPC, 9/125µm OS2, 2.0m



DESCRIPTION	Order No.
FO Patchcord Duplex LC/UPC - SC/UPC, 9/125µm OS2, 2.0m LSOH, yellow	HLP29LC02F