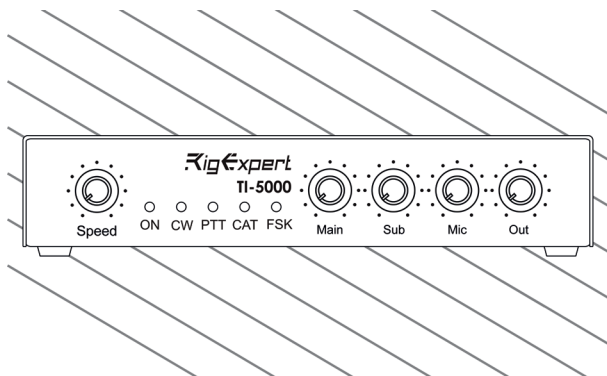


TI-5000

USB Transceiver
Interface

RigExpert®



Software Setup
Examples

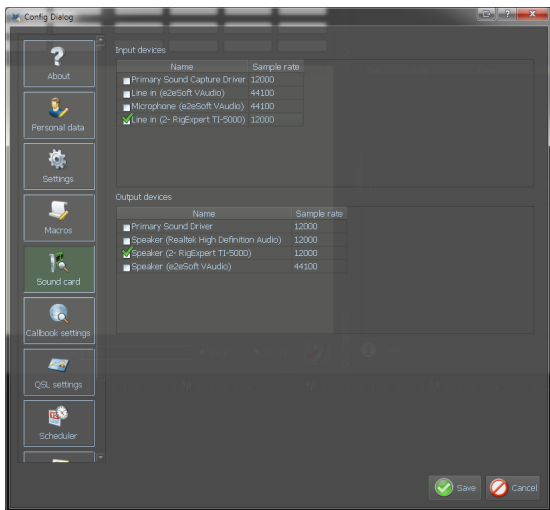
Table of contents

MixW4	4
Audio configuration	4
CAT & PTT configuration	5
MixW2	8
Audio configuration	8
CAT configuration	9
PTT configuration	10
FSK mode	10
AFSK mode	11
DigiPan	12
Audio configuration	12
PTT configuration	12
MMTTY	13
Audio configuration	13
PTT configuration	13
FSK mode	14
AFSK mode	15
MMSSTY	16
Audio configuration	16
PTT configuration	16
MMVARI	17
Audio configuration	17
PTT configuration	17
Fldigi	18
Audio configuration	18
PTT configuration	18
CAT configuration	19
Ham Radio Deluxe	20
CAT configuration	20
Audio configuration	20
PTT configuration	21
CW configuration	21
FSK mode	22
AFSK mode	22
WinTest	23
CAT configuration	23
PTT/CW configuration	24
WINKEY configuration	24
WSJT-X	25
Audio configuration	25
CAT configuration	25
PTT configuration	26

MixW version 4.0

Audio configuration

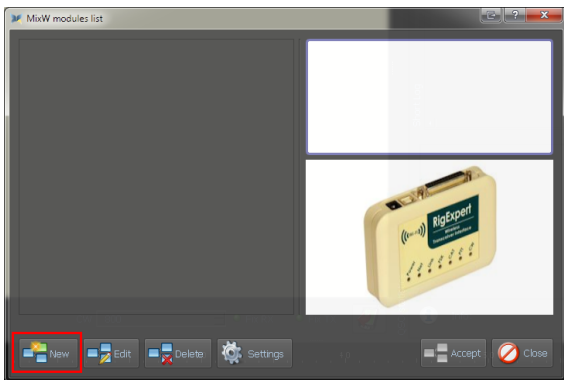
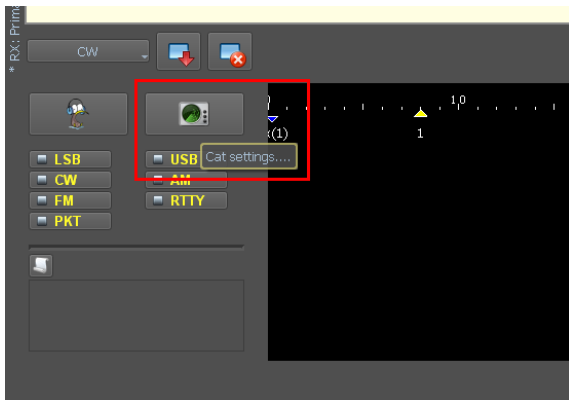
Install and run MixW. Configure personal data (such as callsign and name), then go to Settings– Sound card settings menu.

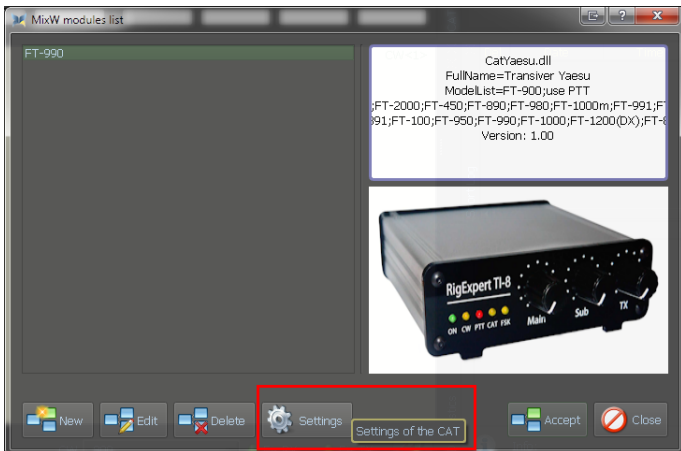
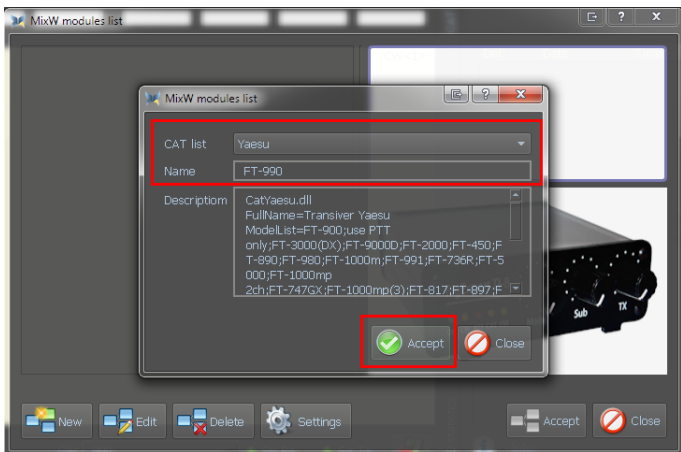


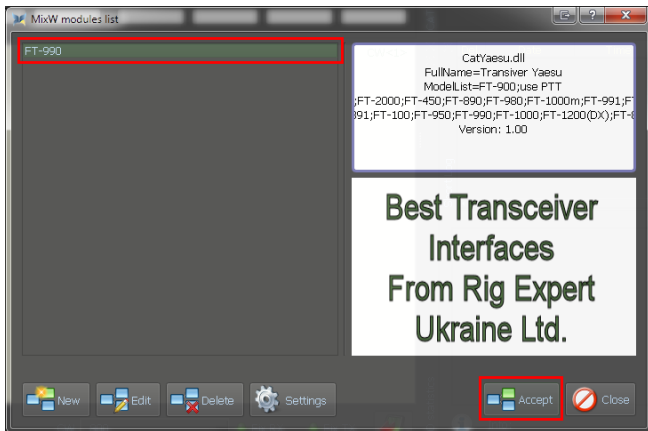
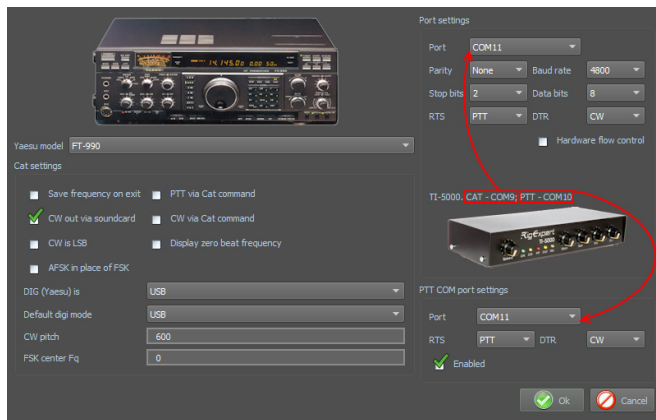
Select RigExpert TI-5000 as both Input and Output, then check other settings and finally press Save to apply new settings.

CAT & PTT configuration

Go to CAT menu. Press New and select transceiver brand in the Cat list. Enter the transceiver model in the Name box.



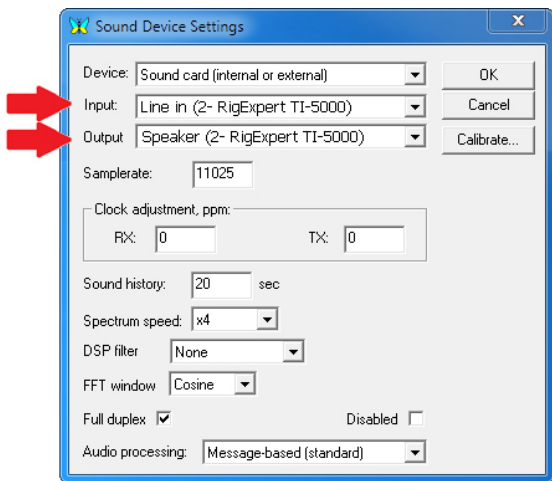




MixW version 2.20

Audio configuration

Install and run MixW. Configure personal data (such as callsign and name), then go to Configure – Sound device settings menu.

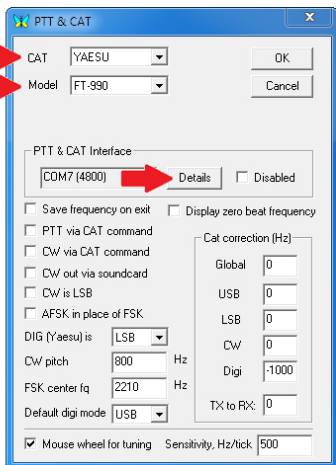


Select RigExpert TI-5000 as both Input and Output, then check other settings and finally press OK to apply new settings.

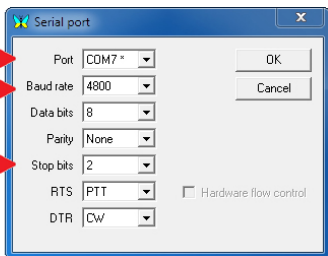
CAT configuration

Go to Configure – TRCVR CAT/PTT menu.

Select your transceiver type and model and press Details.



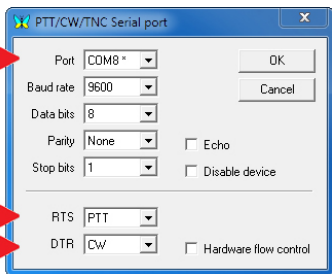
In the Serial port window, select a serial port number for the CAT system. Select a baudrate and a number of stop bits according to the user's manual of your transceiver. Press OK to close this window, and then review other settings in the PTT&CAT dialog. Finally then press OK to finish.



PTT configuration

Go to Configure – Secondary PTT port – Port settings menu.

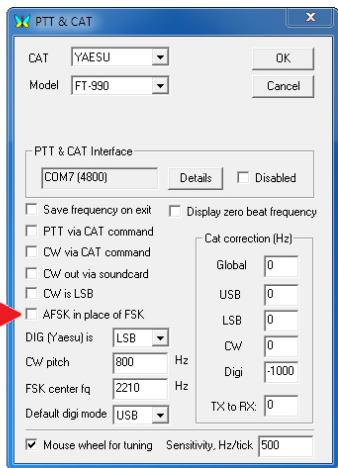
Select a serial port number which should be used for PTT and CW outputs, and make sure RTS and DTR outputs are configured for PTT and CW, correspondingly. Press OK to continue.



FSK mode

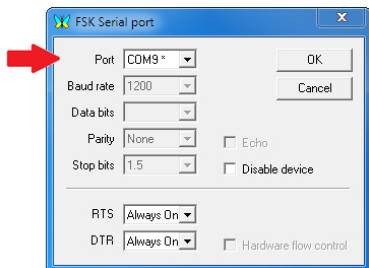
Go to Configure – TRCVR CAT/PTT menu and make sure that the “AFSK in place of FSK” box is not checked.

Press OK to close the dialog.



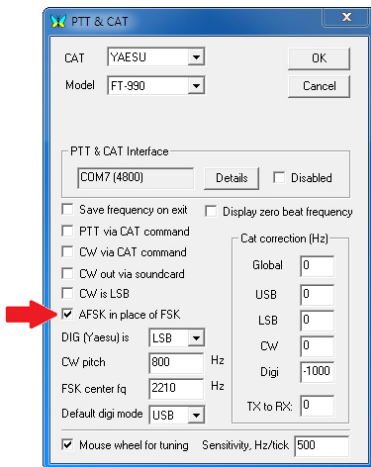
Next, go to Configure – FSK port – Port settings menu.

Select a serial port number which should be used for the FSK output (COM9 in this example) and press OK to continue.



AFSK mode

Go to Configure – TRCVR CAT/PTT menu and make sure that the “AFSK in place of FSK” box is checked.

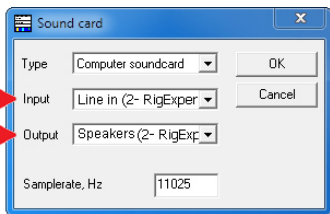


DigiPan version 2.0

Audio configuration

Go to Configure – Sound card menu.

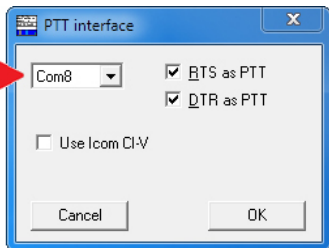
Select RigExpert TI-5000 as both Input and Output and press OK to apply new settings.



PTT configuration

Go to Configure – Serial port menu to set up the PTT output.

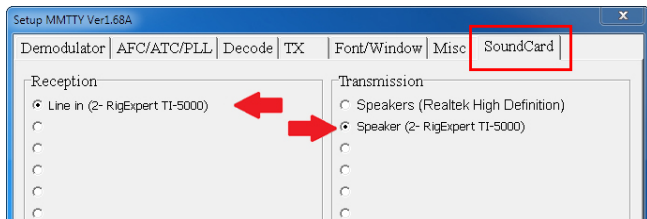
Select a serial port number which should be used for the PTT output (COM8 in this example) and press OK to continue.



Audio configuration

In the MMTTY software, go to Options – MMTTY Settings menu. Choose the SoundCard tab to configure audio input and output devices.

**MMTTY
version 1.68A**

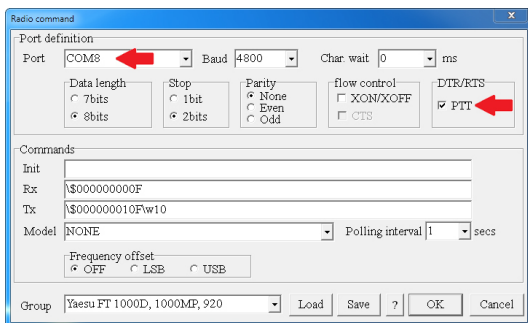


Select RigExpert TI-5000 in both Reception and Transmission areas.

PTT configuration

Switch to the TX tab and click the “Radio command” button.

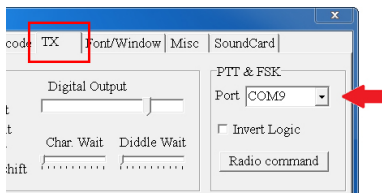
Select a serial port number which should be used for the PTT output (COM8 in this example), and make sure the PTT box is checked. Leave all other settings unchanged. Press OK to close this window.



FSK mode

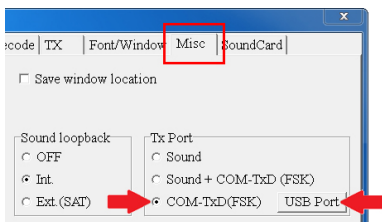
Switch to the TX tab for the FSK port configuration.

Select a serial port number which should be used for the FSK output (COM9 in this example).



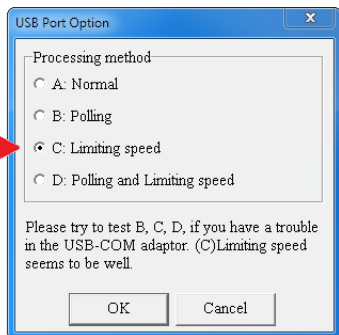
Switch to the Misc tab.

Select "COM-TxD(FSK)" in the "Tx Port" area and then press the "USB Port" button.



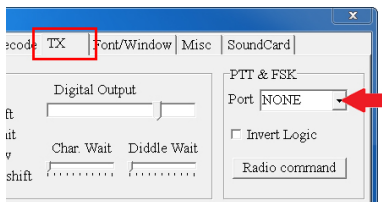
Select "C: Limiting speed" in the "USB Port Options" dialog and press OK.

Finally, press OK in the "Setup MMTTY" dialog to apply new settings.



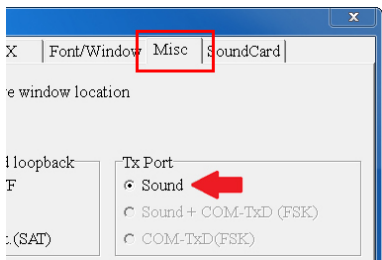
AFSK mode

Switch to the TX tab and select NONE in the Port box.



Switch to the Misc tab and select Sound in the “Tx Port” area.

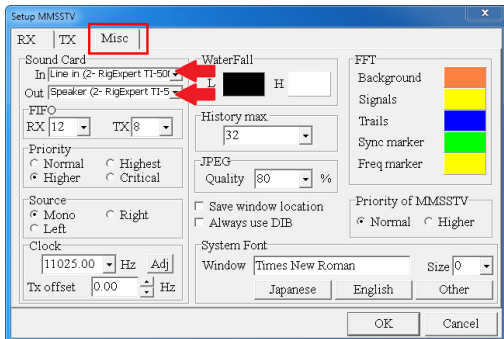
Finally, press OK in the “Setup MMTTY” dialog to apply new settings.



MMSSTV version 1.13A

Audio configuration

In the MMSSTV software, go to Options – Setup MMSSTV menu. Choose the Misc tab to configure audio input and output devices.

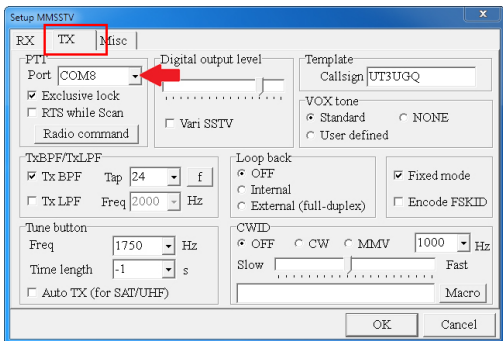


Select RigExpert TI-5000 in both In and Out boxes in the “Sound Card” area.

PTT configuration

Switch to the TX tab.

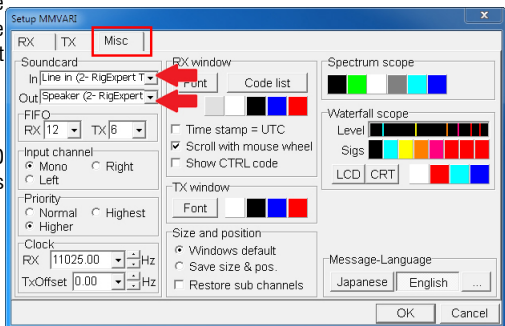
Select a serial port number which should be used for the PTT output. Press OK to close this window.



Audio configuration

In the MMVARI software, go to Options – Setup MMVARI menu. Choose the Misc tab to configure audio input and output devices.

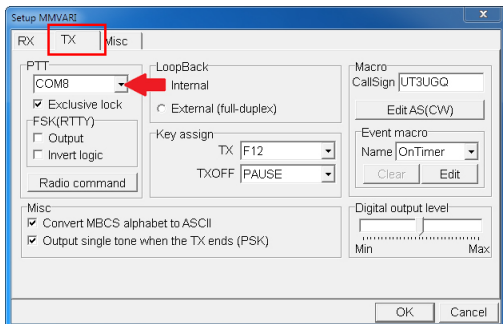
Select RigExpert TI-5000 in both In and Out boxes in the “Sound Card” area.



PTT configuration

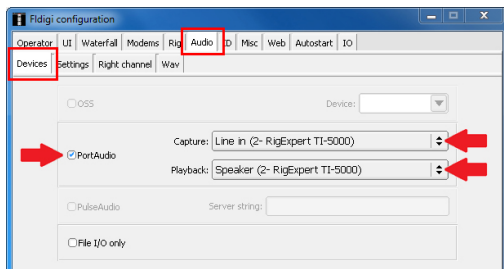
Switch to the TX tab.

Select a serial port number which should be used for the PTT output. Press OK to close this window.



Audio configuration

In the Fldigi software, go to Configure – Sound Card menu. Choose the Audio tab and then choose Devices tab below.

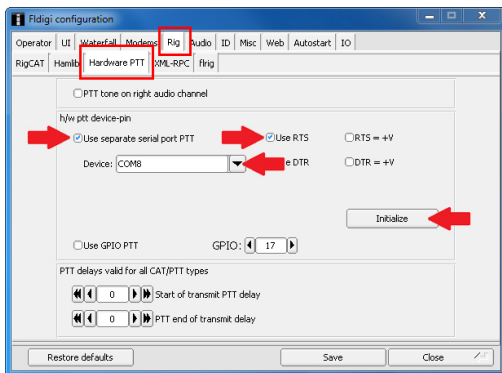


Check the PortAudio box and then select RigExpert TI-5000 in both Capture and Playback boxes.

PTT configuration

Switch to the Rig tab and then select the Hardware PTT tab below.

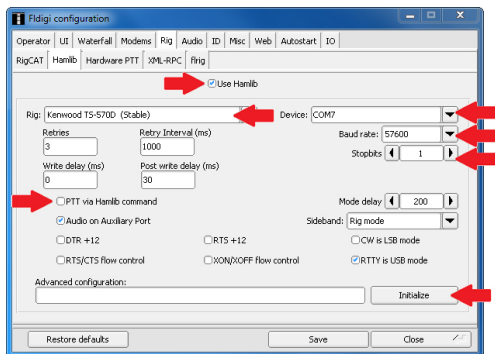
Check the “Use separate serial port PTT” and then select a serial port number which should be used for the PTT output. Also check the “Use RTS” port box and press Initialize to open the serial port. Do not forget to press the Save button to save your settings.



CAT configuration

Switch to the Hamlib tab.

First, check the “Use Hamlib” box. Next, choose your transceiver model and uncheck the “PTT via Hamlib command” box. Select a baudrate and a number of stop bits according to the user’s manual of your transceiver. Finally, press Initialize to open the CAT serial port and then press the Save button to save your settings.

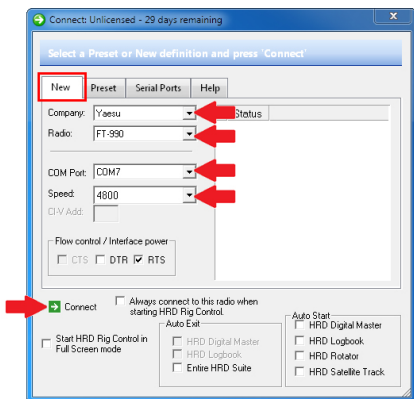


Ham Radio Deluxe version 6.2.3.271

CAT configuration

Run Ham Radio Deluxe and go to File – Connect menu (or press Ctrl–N). In the Connect dialog, select the New tab.

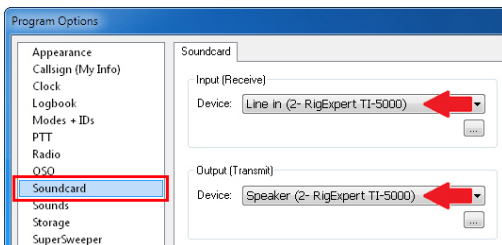
First, select your transceiver type and model. Next, select a serial port number for the CAT system (COM7 in this example) as well as baudrate according to the user's manual of your transceiver. Finally, press Connect to let the HRD talk to your rig.



Audio configuration

Run the Digital Master and go to Tools – Program options menu. Select Soundcard from the list at the left.

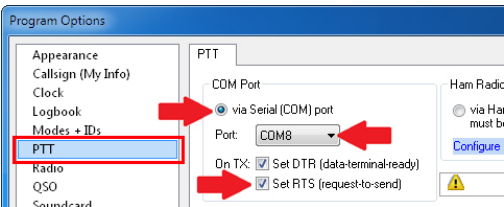
Select RigExpert TI-5000 in both Input and Output boxes.



PTT configuration

In the Digital Master, go to Tools – Program options menu. Select PTT from the list at the left.

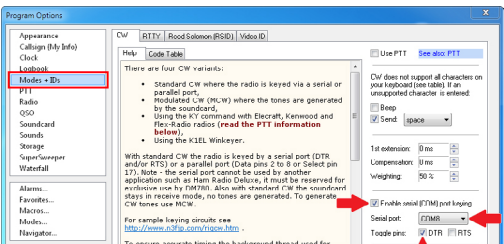
Select the “via Serial (COM) port” radio button, then select a serial port number which should be used for the PTT output. Also check the “Set RTS (request to send)” box.



CW configuration

In the Digital Master, go to Tools – Program options menu. Select “Modes + IDs” from the list at the left.

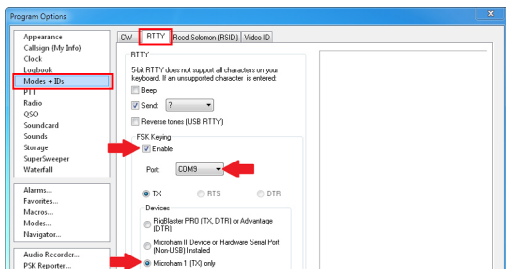
Check the “Enable serial (COM) port keying” and select a serial port number which should be used for the CW output (COM8 in this example, same as the PTT port). Also check the “Toggle pins: DTR” box.



FSK mode

In the Digital Master, go to Tools – Program options menu. Select “Modes + IDs” from the list at the left and then choose the RTTY tab.

In the “FSK Keying” area, check the Enable box and select a serial port number which should be used for the FSK output. In addition, select the “Microham 1 (TX) only” radio button. To operate RTTY using the FSK mode, select “RTTY-45 (FSK)” mode in the main window of the Digital Master. Also check the “Set RTS (request to send)” box.



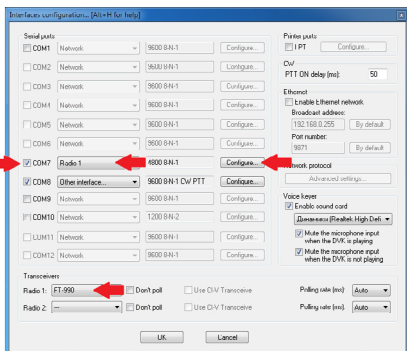
AFSK mode

To operate RTTY using the AFSK mode, do not configure the FSK output. Just select “RTTY-45 (AFSK)”, “RTTY-50” or “RTTY-75” mode in the main window of the Digital Master.

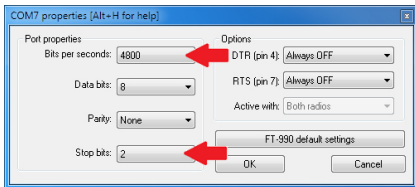
CAT configuration

In the WinTest program, go to Options – Configure interfaces menu.

First, select your transceiver model (“Radio 1” at the bottom left of the window). Next, check the box which corresponds to the CAT port of the RigExpert TI-5000. Select “Radio 1” and then click “Configure”.



Select baudrate and the number of stop bits according to the user’s manual of your transceiver. Click OK to continue.



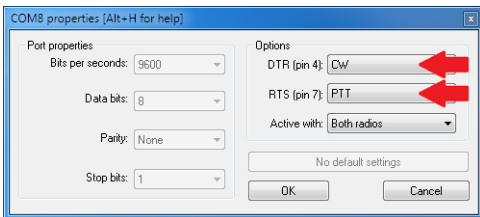
PTT/CW configuration

In the WinTest program, go to Options – Configure interfaces menu.



Check the box which corresponds to the PTT/CW port of the RigExpert TI-5000. Select “Other interface” and then click “Configure”.

In the Options area, select CW as “DTR (pin 4)” and PTT as “RTS (pin 7)”. Click OK to continue.



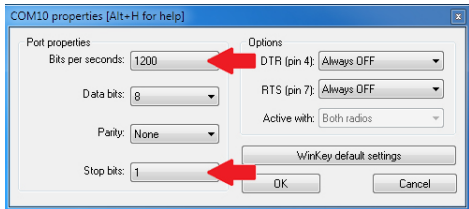
WINKEY configuration

In the WinTest program, go to Options – Configure interfaces menu.



Check the box which corresponds to the WinKey port of the RigExpert TI-5000. Select “WinKey” and then click “Configure”.

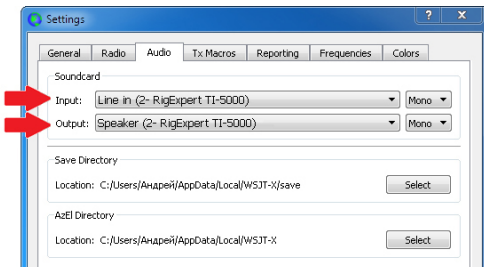
Select baudrate and the number of stop bits according to the user’s manual. Click OK to continue.



Audio configuration

Install and run WSJT-X. Configure personal data (such as callsign and name) in File – Settings – General menu, then go to File – Settings – Audio menu.

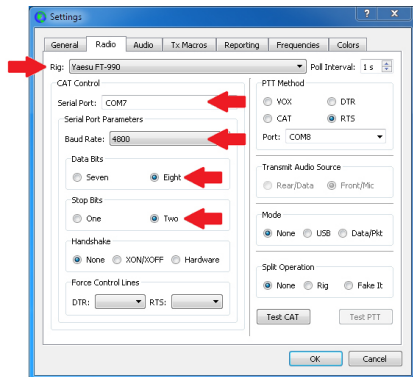
Select RigExpert TI-5000 as both Input and Output, then check other settings and finally press OK to apply new settings.



CAT configuration

Go to File – Settings – Radio menu.

Select your transceiver model and a serial port number for the CAT system. Select a baudrate and a number of stop bits according to the user's manual of your transceiver. Press OK to close this window, and then review other settings in the PTT&CAT dialog. Finally then press OK to finish.

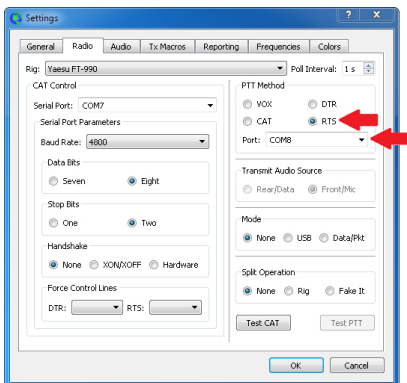


Many Icom rigs cannot be queried for split status, current VFO or split transmit frequency. Consequently you should not change the current VFO, split status or frequency using controls on the radio when using WSJT-X with an Icom radio.

PTT configuration

Go to File – Settings – Radio menu.

Select a serial port number which should be used for PTT and CW outputs. Press OK to continue.



<http://www.rigexpert.com>

Copyright © 2018 Rig Expert Ukraine Ltd.

“RigExpert” is a registered trademark of Rig Expert Ukraine Ltd.

Made in Ukraine



Doc. date: 07-Mar-2018